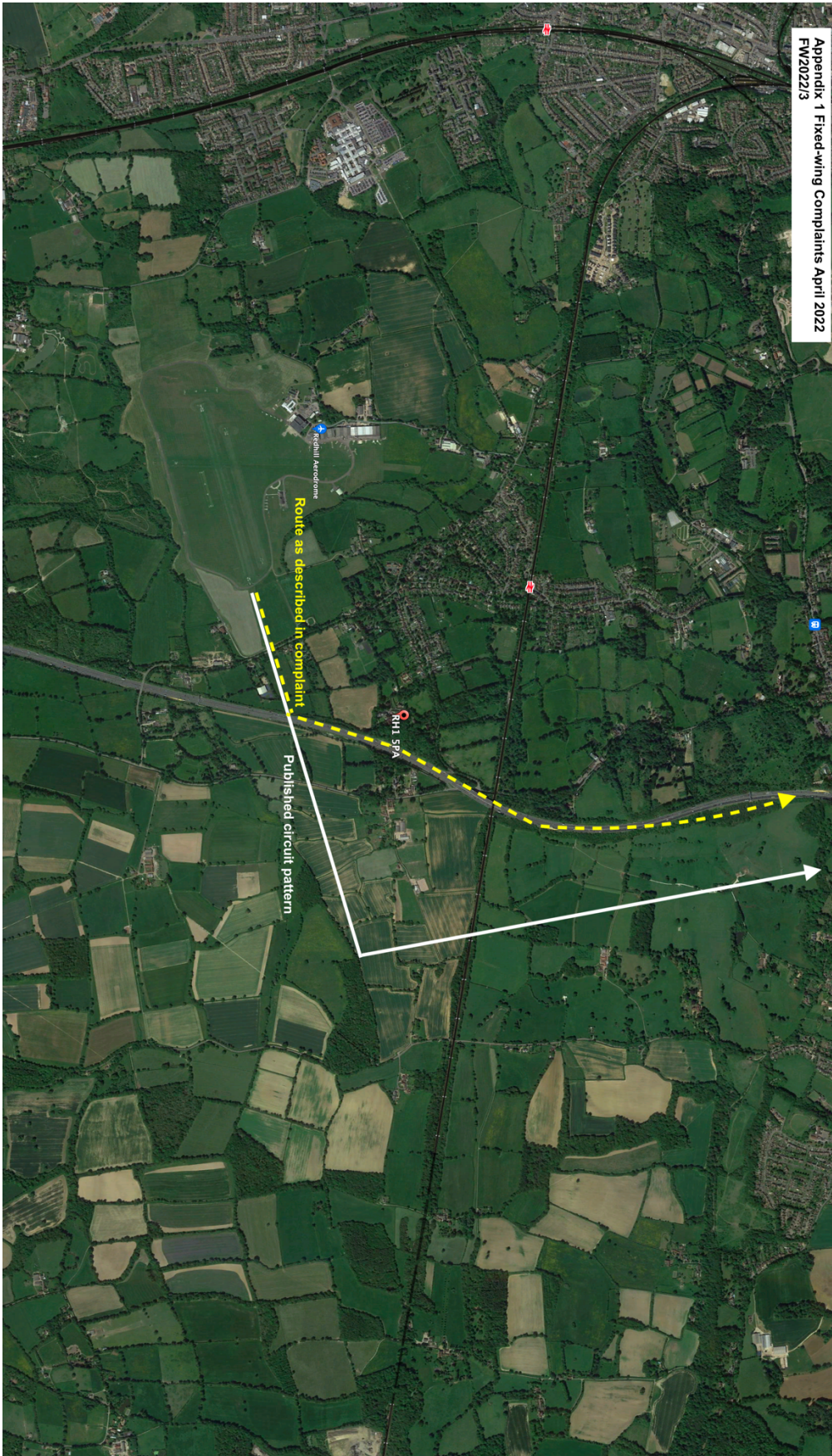
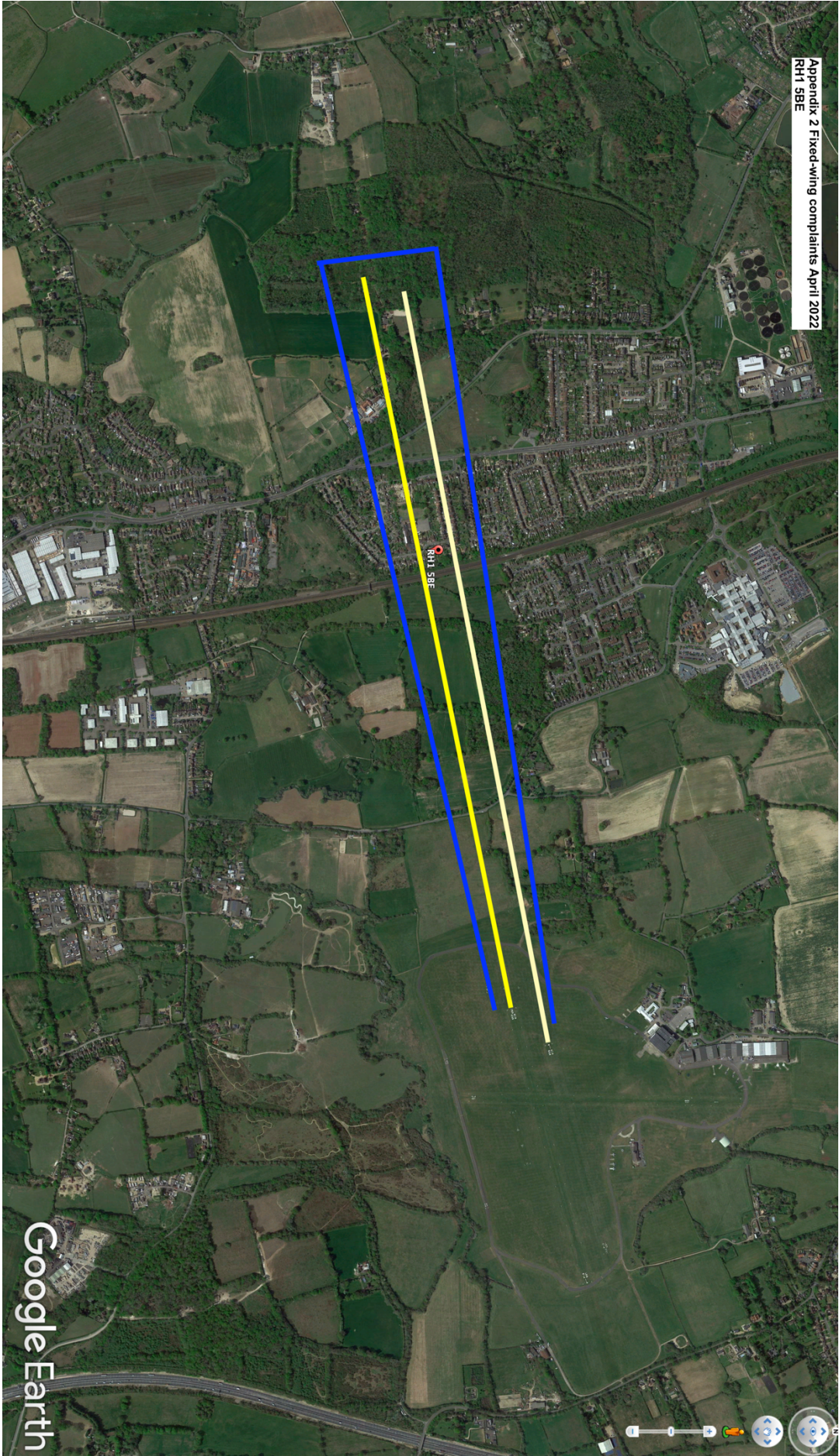


Reference	Date/Time	Location	Runway	F/W Movements	Total Movements	Complaint	Action
FW2022/3	16.04.2022	RH1 5PA	08R	175	216	Complaint of fixed-wing aircraft not following the correct flight path and flying in a NE'ly direction over the location.	Aircraft identified as a J3 Piper Cub training a new pilot. Aircraft is slower than most aircraft based at Redhill and the check pilot believed he was being helpful by having the pilot undergoing the check flight to turn early and fly up the M23. See Appendix 1. It has been explained that the standard circuit pattern should be flown under normal circumstances. Pilot has been re-briefed.
FW2022/4	16.04.2022	RH1 5BE	26L			Complainant stated that for the past two days they had been disturbed by fixed-wing aircraft taking off over their location.	14 April Rwy 26L in use all day. 15 April Rwy 26L in use until 1425Z when runway was changed to 18. Rwy 18 remained in use until Aerodrome closed. As has previously been explained this location is within the climb out area of Rwy 26L/26R and will be subject to overflying and aircraft noise when these runways are in use. Location shown on Appendix 2.



Appendix 1 Fixed-wing Complaints April 2022
FW2022/3





Helicopter Flying Complaints – April 2022

Nil